

# 2018

ANNUAL REPORT  
& 2019 CALENDAR

*#WeAreVirginiaGarcia*



Virginia Garcia Memorial  
**HEALTH CENTER**



# our mission

To provide high-quality, comprehensive, and culturally appropriate primary health care to the communities of Washington and Yamhill counties with a special emphasis on migrant and seasonal farmworkers and others with barriers to receiving health care.



PHOTO CREDIT: ALAN WEINER

*#WeAreVirginiaGarcia*



# Message from the CEO



Reflecting on the past year, I am proud of Virginia Garcia's impact in our community. From an organization that started in a three-car garage in Cornelius 43 years ago, to the 18 clinics through Washington and Yamhill counties we are today, our commitment to do better for our community and our patients remains steadfast.

The highlight of this past year is the momentous opening of our Beaverton Wellness Center. The unwavering support of our donors means access for new patients, expands the health care options we can offer them and provides for a place that is both welcoming and accessible. Our new Wellness Center offers medical, dental, pharmacy, mental and behavioral health all in one location.

Our partnership with Pacific University's College of Health Professions engages the next generation of health care providers. The new multi-purpose space allows a variety of health education, movement, nutrition, and other activities to engage our patients beyond the exam room.

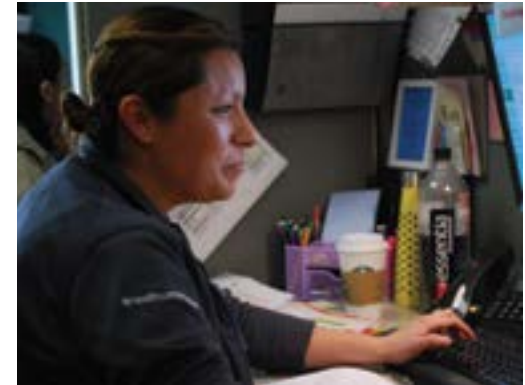
The Beaverton Wellness Center goes beyond notions of comprehensive health care – we're providing care to the community's most ethnically and racially diverse patients. With over 50 different languages spoken at our Beaverton clinic, we think we have made one fact very clear: Virginia Garcia is a place that welcomes everyone regardless of their background or country of origin. Together we are all part of the same family with the same vision – to provide high quality health care to those that need it most, and working collectively to remove barriers that get in the way of care.

Make no mistake, the journey for Virginia Garcia is not complete. There are many more patients to serve, many more barriers to remove. We will ask you to share your resources to support and strengthen our organization as we push into the future, ensuring our patients are receiving not only compassion, but the highest quality care possible.

Thank you for all that you have done for Virginia Garcia, our patients and their families. And, thank you for all that you will continue to do.

Together we will get the work done.  
Together we are Virginia Garcia.

  
Gil Muñoz, CEO





*"I have energy,  
and I feel good.  
Really good."*

– DENISE

**Denise** weighed over 200 pounds and was pre-diabetic. Her knees hurt, she suffered with chronic headaches and she was depressed. Since joining the Cornelius Wellness Center Zumba classes more than a year ago, Denise has lost nearly 70 pounds and discovered a new, healthier life. "I have energy, and I feel good," she said. "Really good."



Cornelius was Virginia Garcia's first Wellness Center, opened in 2012, for the purpose of treating the whole person. In addition to medical, pharmacy, mental health and dental services, patients engage in healthy behaviors through education sessions to help manage and prevent chronic health conditions, such as diabetes and hypertension. They take classes in healthy nutrition, cooking, exercise, parenting and more. In 2018, we opened a second Wellness Center in Beaverton.

It was the music that drew Denise to try Zumba. She couldn't resist the upbeat salsa pulsating through the hallways of the Cornelius Wellness Center. From her first Zumba class she was hooked. "I just fell in love," she said.

Today, Denise moves to the music with grace, ease and confidence. "I've made many friends here. We're like family," she said. "Every month we get together for a potluck. Of course we bring only healthy food."

# JANUARY 2019



Virginia Garcia Memorial  
**HEALTH CENTER**

SUNDAY	MONDAY	TUESDAY	WEDNESDAY	THURSDAY	FRIDAY	SATURDAY
		1  New Year's Day	2	3	4	5
6	7	8	9	10	11	12
13	14	15	16	17  Virginia Garcia's Birthday	18	19
20	21  Martin Luther King Jr. Day	22	23	24	25	26
27	28	29	30	31		



# leading in the community

#WeAreVirginiaGarcia



Many of Virginia Garcia's staff members are also community leaders. When they aren't making a difference for patients in our clinics, they're making a difference in their communities as members of school boards, city councils and park districts.

Among them is **Yadira Martinez**, who leads our dental hygiene program. Yadira is a member of the Hillsboro School Board and the Oregon Board of Dentistry. She grew up in Hillsboro, the daughter of migrant farm workers, and found herself drawn to health care from an early age.



Yadira became a dental assistant at VG in 2000, and her drive to advance her knowledge of dental care continued to grow as she graduated at the top of her class from Pacific University's first-ever dental hygiene program. In 2014, Yadira was selected by the Governor to join the State Board of Dentistry. Yadira's influence expanded further when she was appointed to the Hillsboro School Board in 2018.

*"I have roots in this community. With my background in health care, I'm a new set of eyes."*

– YADIRA MARTINEZ

# FEBRUARY 2019



Virginia Garcia Memorial  
**HEALTH CENTER**

SUNDAY	MONDAY	TUESDAY	WEDNESDAY	THURSDAY	FRIDAY	SATURDAY
					1	2  Groundhog Day
3	4	5	6	7	8	9
10	11	12	13	14  Valentine's Day	15	16
17	18  President's Day	19	20	21	22	23
24	25	26	27	28		



# enduring partnerships

#WeAreVirginiaGarcia



*"Virginia Garcia embodies the mandate of our founder, Fred Meyer: to adapt to 'changing conditions and problems' to meet the needs of Oregon communities."*

– MICHELLE J. DEPASS, PRESIDENT AND CEO OF MEYER MEMORIAL TRUST

When **Meyer Memorial Trust** started their grant program 36 years ago, (known then as Fred Meyer Charitable Trust), Virginia Garcia Memorial Health Center was among their first group of 34 grantees.

It was the beginning of an amazing partnership. We grew up together, evolving as times changed. In fact, the first project Meyer funded, Perinatal Risk Reduction and Education Project at our Cornelius Clinic, has evolved over the years into a permanent program called CenteringPregnancy® at our Women's Clinic in Hillsboro.

Since 1982, Meyer has awarded roughly \$758 million in grants and program-related investments to more than 3,380 organizations in Oregon and Southwest Washington – and we are grateful to be among this stellar group.

Meyer supports Virginia Garcia in countless ways, helping us fund the construction of new clinics, including two of our largest clinics – Cornelius Wellness Center and Beaverton Wellness Center – and dozens of other programs and projects, including our new Advocacy & Equity program.



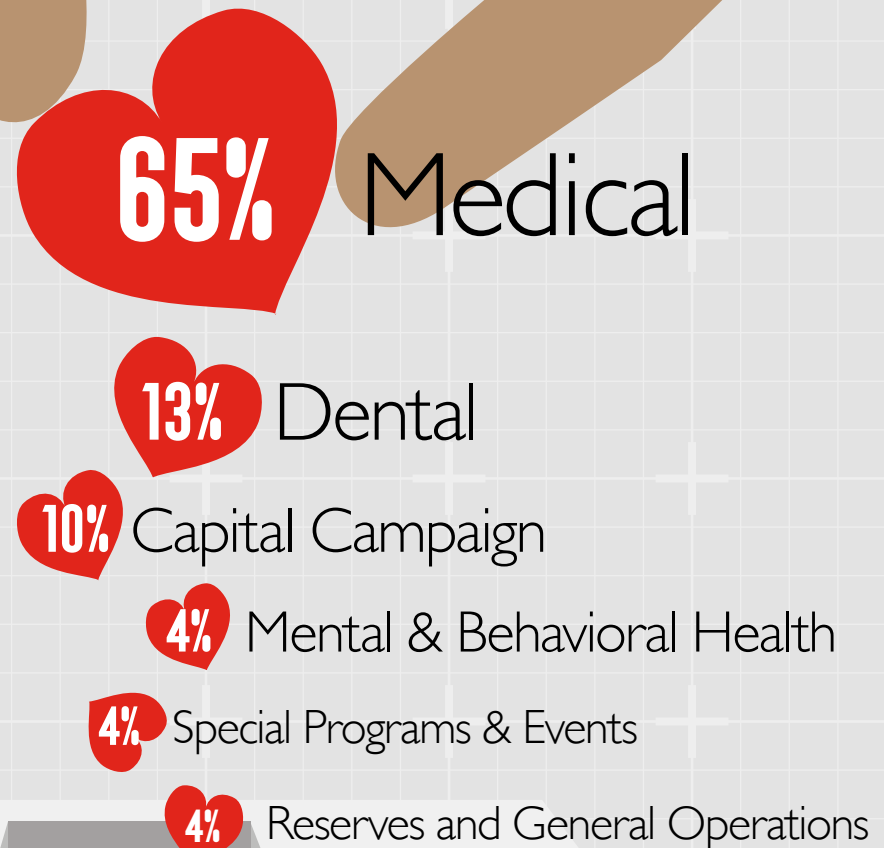
# MARCH 2019



Virginia Garcia Memorial  
**HEALTH CENTER**

SUNDAY	MONDAY	TUESDAY	WEDNESDAY	THURSDAY	FRIDAY	SATURDAY
					1	2
3	4	5	6	7	8	9
10	11	12	13	14	15	16
Daylight Savings Begins						
17	18	19	20	21	22	23
St. Patrick's Day			Spring Equinox			
24	25	26	27	28	29	30
31						

Virginia Garcia received over **\$14.1M** in grants and donations last year. That money goes directly to our health centers where you can be sure we are putting your gifts to work in every possible way.





# APRIL 2019



Virginia Garcia Memorial  
**HEALTH CENTER**

SUNDAY	MONDAY	TUESDAY	WEDNESDAY	THURSDAY	FRIDAY	SATURDAY
	1	2	3	4	5	6
7	8	9	10	11	12	13
14	15	16	17	18	19	20
					Passover Begins	
21	22	23	24	25	26	27
Easter						
28	29	30				

**Research shows that oral health is inextricably linked to physical health.** When you take care of both the mouth and the body a patient's health improves dramatically. So in 2017, Virginia Garcia launched a program that would integrate dental and medical services.

VG optimized the way our patients receive care. We placed dental hygienists in our Women's Clinic - allowing pregnant moms to receive prenatal care and a dental checkup in one visit and we started including immunizations during our Baby Days events — giving families the opportunity to see both providers in one place.

By integrating medical and dental records, providers can be sure to take care of the whole person — providing our patients with the very best comprehensive care possible.



## FAST FACTS

## ORAL HEALTH & OVERALL HEALTH



Every dollar spent on preventive dental care could save **\$8 to \$50** in restorative and emergency treatments and potentially more in additional types of medical treatment.

Source: American Dental Hygienists Association, 2006

Periodontal treatment is associated with a significant decrease in **annual medical costs** and **hospital admissions** among patients who were diagnosed with periodontal disease and who also had coronary artery disease, type 2 diabetes or cerebral vascular disease. Source: Dr. Marjorie Jeffcoat, United Concordia Dental



### Annual Medical Costs

Average savings in annual medical costs among patients with periodontal disease who completed periodontal treatment

<b>\$1,090</b>	Coronary Artery Disease 10.7% savings
<b>\$2,840</b>	Type 2 Diabetes 40.2% savings
<b>\$5,681</b>	Cerebral Vascular Disease 40.9% savings



### Hospital Admissions

Decreased hospitalizations in patients with periodontal disease who completed periodontal treatment

<b>↓ 28.6%</b>	Coronary Artery Disease
<b>↓ 39.4%</b>	Type 2 Diabetes
<b>↓ 21.2%</b>	Cerebral Vascular Disease



# MAY 2019

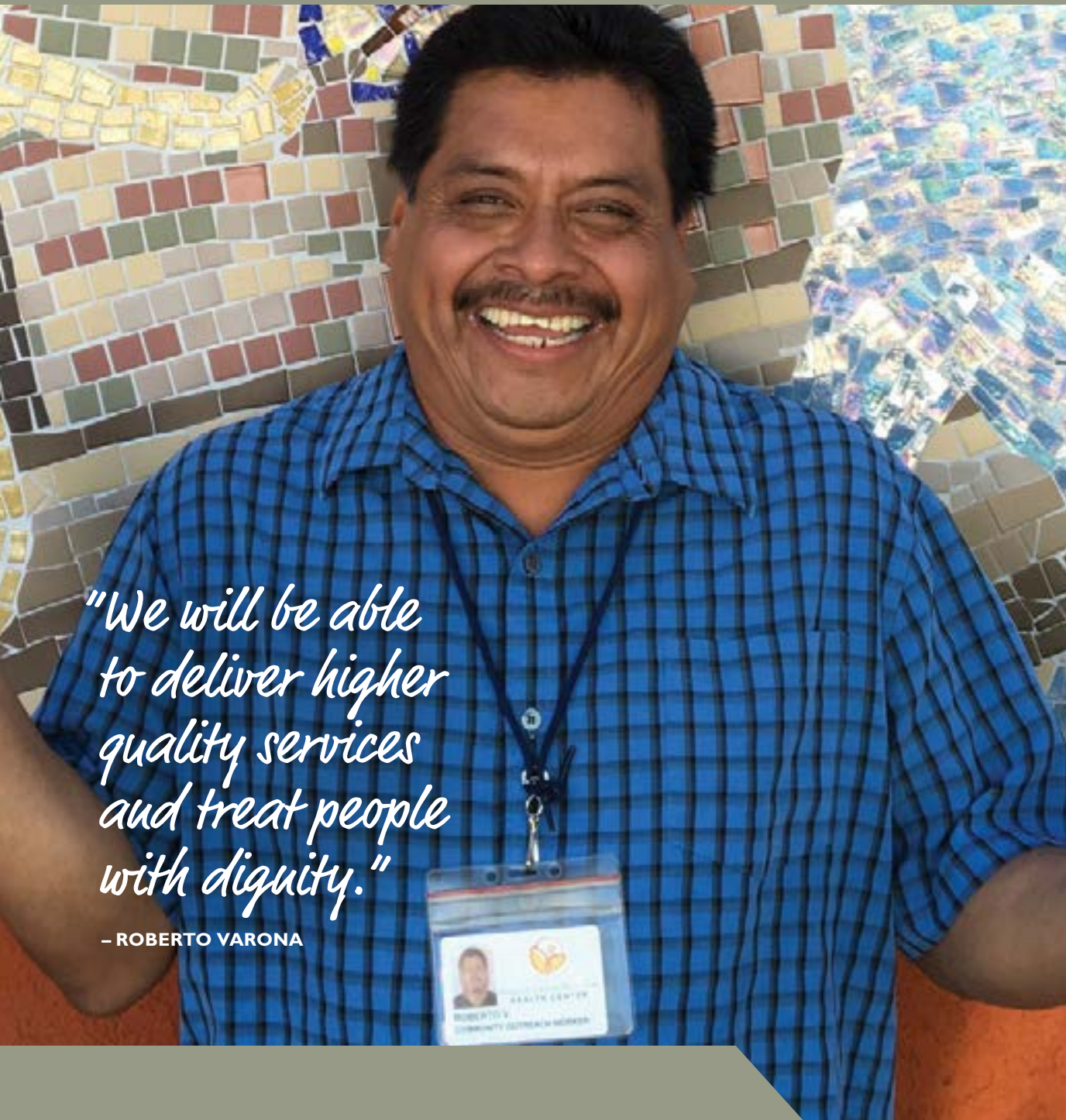


Virginia Garcia Memorial  
**HEALTH CENTER**

SUNDAY	MONDAY	TUESDAY	WEDNESDAY	THURSDAY	FRIDAY	SATURDAY
			1	2	3	4
5	6	7	8	9	10	11
Ramadan Begins						
12	13	14	15	16	17	18
Mother's Day						
19	20	21	22	23	24	25
26	27	28	29	30	31	
	Memorial Day					

# bringing care to our patients

#WeAreVirginiaGarcia



*"We will be able to deliver higher quality services and treat people with dignity."*

— ROBERTO VARONA



Roberto Varona knows the back-breaking labor required of farm workers. He spent a few years working in the fields, a cannery and other jobs before finding work with Virginia Garcia as a driver 17 years ago. For his first seven years, Roberto drove our medical/dental van to migrant camps throughout Washington and Yamhill counties, working closely with the patients.

"Many of the people who come to our camps every year arrive in family groups with one vehicle and they live in small cabins at the camps," Roberto said. "They come with medical, dental, vision, and mental health issues. Often, they have no time to leave the fields to visit a clinic, they have no transportation or the resources to pay for medical or dental services."

Although we lost our 20-year-old mobile van to a traffic accident in 2018, plans are already in motion to replace it with a larger, better-designed mobile clinic.

Medical and dental staff will be able to work with built-in equipment, including flexible and comprehensive dental equipment. Staff can take x-rays and sterilize equipment, as well as access vaccine refrigerators and specimen drawers.

"We will be able to deliver higher quality services and treat people with dignity," Roberto said.



# JUNE 2019



Virginia Garcia Memorial  
**HEALTH CENTER**

SUNDAY	MONDAY	TUESDAY	WEDNESDAY	THURSDAY	FRIDAY	SATURDAY
						1
2	3	4	5	6	7	8
9	10	11	12	13	14	15
16	17	18	19	20	21	22
Father's Day					Summer Solstice	
23	24	25	26	27	28	29
30						



*"Either you believe in this or you don't. If you believe in it, you need to be part of it."*

– WILFREDO FIGUEROA

**Wilfredo Figueroa** likes to chat with other patients as he sits in the waiting area at VG's Hillsboro Clinic. He asks about their lives and if they are happy with their health care.

"To see mothers with two kids and no father, or elderly people, and they tell me their stories about how they struggle every day," he said. "When you talk to the person, it's very different. You empathize."

He doesn't tell them he is a member of Virginia Garcia's Health Center Board of Directors because he is also a patient. Wilfredo is a principal engineer at Intel and joined the VG board in 2009 after being recruited by retired Intel colleague, Lynn Baker, who worked for VG.

"Once I understood the mission, what really helped me was to use the services," he said. Wilfredo talks with the medical assistants, nurses and physicians during his annual physical to learn more about them and their work.

Growing up in Puerto Rico, Wilfredo came from "humble beginnings," he said. "I've been blessed all my life. My service to Virginia Garcia is my way to pay back."

# JULY 2019



Virginia Garcia Memorial  
**HEALTH CENTER**

SUNDAY	MONDAY	TUESDAY	WEDNESDAY	THURSDAY	FRIDAY	SATURDAY
	1	2	3	4 Independence Day	5	6
7	8	9	10	11	12	13
14	15	16	17	18	19	20 Grape Adventure
21	22	23	24	25	26	27
28	29	30	31			



# celebrating our success

*#WeAreVirginiaGarcia*



PHOTO CREDIT: PAUL RICH STUDIO



We did it! With our Boards' leadership, the donations of hundreds of individuals, organizations, and our hard working staff, we opened our **Beaverton Wellness Center** with great fanfare and celebration.

The Wellness Center creates a central place for patients needing medical, dental, pharmacy, mental/behavioral health services as well as fitness, diabetes education and healthy cooking classes, kids' summer activities and more, all under one roof. It is the first of its kind in Beaverton and the second wellness center for Virginia Garcia, bolstering our move toward preventive health care for our communities.

The Wellness Center is more than a clinic. It is a reflection of the dedication and commitment that this community has to provide a place where anyone can go to receive high quality health care.

What the Beaverton Wellness Center represents goes beyond comprehensive health care. With our patients speaking 50 different languages at this clinic alone, we know one fact is very clear: Virginia Garcia is a place that welcomes everyone regardless of their background or country of origin and together we are all part of the same family with the same vision. A vision to provide high quality health care to those that need it most, to be a light to the community and to speak for those that cannot speak for themselves.



# AUGUST 2019



Virginia Garcia Memorial  
**HEALTH CENTER**

SUNDAY	MONDAY	TUESDAY	WEDNESDAY	THURSDAY	FRIDAY	SATURDAY
				1	2	3
4	5	6	7	8	9	10
11 National Health Center Week Begins	12	13	14	15	16	17 National Health Center Week Ends
18	19	20	21	22	23	24
25	26	27	28	29	30	31



# going beyond to care for our patients

*#WeAreVirginiaGarcia*



When Clinical Pharmacist **Katie Steele** prescribed medication for an uninsured Newberg patient to help control her diabetes, she had no idea it would cost the woman \$90 at a local pharmacy. The woman used her grocery money to buy the medicine instead of food.

That was the catalyst for Katie. If VG's Newberg Pharmacy had been open, the woman would have paid \$7 under our reduced pricing. However, VG had to close the pharmacy in June 2016 because the volume of prescriptions was so low it couldn't cover the cost of the pharmacist. Katie proposed that she take on a dual-role –as the retail pharmacist at the Newberg Pharmacy while continuing as a clinical pharmacist. Financially, the numbers worked out and the pharmacy reopened, filling 3,500 prescriptions in its first seven months.

As a clinical pharmacist, Katie works with providers and patients in a clinic to determine the best method to address chronic conditions, providing education about medication and non-medication options. Clinical pharmacists typically don't work in pharmacies, but Katie had completed her first-year residency in a retail pharmacy and liked the work.

With Katie's energy and unwavering commitment to our patients, we're so glad that our patients will continue to access our pharmacy inside of the clinic for years to come.



# SEPTEMBER 2019



Virginia Garcia Memorial  
**HEALTH CENTER**

SUNDAY	MONDAY	TUESDAY	WEDNESDAY	THURSDAY	FRIDAY	SATURDAY
1	2  Labor Day	3	4	5	6	7
8	9	10	11	12	13	14
15  National Hispanic Heritage Month begins	16	17	18	19	20	21
22	23  Fall Equinox	24	25	26	27	28
29  Rosh Hashanah Begins	30					

# volunteering to improve lives

#WeAreVirginiaGarcia

*"Virginia Garcia has a wonderfully diverse clientele, which always makes for an enriching experience."*

– SARAH LARIMER



A year ago, **Sarah Larimer** was driving through Beaverton and saw a clinic with the name Virginia Garcia on the front.

"The name intrigued me," she said. "I looked it up online and saw it was a primary care clinic. With my experience in health care, it further piqued my interest."

Before long, Sarah, a registered dietitian, had signed up as a volunteer and found herself working alongside VG's own registered dietitian Valeria Mallett to create a nutrition program for patients, focusing on those with diabetes.

When she isn't volunteering, Sarah teaches nutrition classes and global health at Oregon Health & Sciences University, as well as online nutrition courses for Brigham Young University, Idaho.

The relationship is mutually beneficial to both VG and Sarah. VG can serve more patients with a professional dietitian, and Sarah, in her first year as a dietitian, gains valuable clinical experience.

VG is proud to work with 198 volunteers who help with everything from community events to working with patients. Thank you to all of our volunteers. If you're interested in volunteering, please contact Julie Titus at 503-352-8611.

# OCTOBER 2019



Virginia Garcia Memorial  
**HEALTH CENTER**

SUNDAY	MONDAY	TUESDAY	WEDNESDAY	THURSDAY	FRIDAY	SATURDAY
		1 Rosh Hashanah Ends	2	3	4	5
6	7	8 Yom Kippur Begins	9 Yom Kippur Ends	10	11	12
13	14 Indigenous People's Day	15 National Hispanic Heritage Month ends	16	17	18	19
20	21	22	23	24	25	26
27	28	29	30	31 Halloween		



# using our voice at Virginia Garcia

#WeAreVirginiaGarcia

**Virginia Garcia Memorial Health Center was born from advocacy.** In response to Virginia's death from a treatable wound, community leaders of all backgrounds came together because they saw an injustice – the disparity between those who could access health care and those who could not. They were determined to create a clinic that served the most vulnerable members of our community.

Forty-three years later, we continue to make great strides in ensuring access to health care for everyone. Still, barriers remain and, lately, we see them multiplying, threatening the health and welfare of our patients and community members.

To respond to this growing challenge, we made advocacy a priority at VG. Our Boards and executive leaders draw on our roots in advocacy to empower our 600 knowledgeable and passionate employees.

Together, we are lending our voices to ensure that everyone has access to health care, and we are working to make VG clinics a safe haven for all. We support our staff engaging politically and in their communities, and with our Board's leadership, we are cultivating a culture of community engagement.



# NOVEMBER 2019



Virginia Garcia Memorial  
**HEALTH CENTER**

SUNDAY	MONDAY	TUESDAY	WEDNESDAY	THURSDAY	FRIDAY	SATURDAY
					1	2
3  Daylight Savings Ends	4	5  Election Day	6	7	8	9
10	11  Veterans Day	12	13	14	15	16
17	18	19	20	21	22	23
24	25	26	27	28  Thanksgiving Day	29	30



# thanking our supporters

#WeAreVirginiaGarcia



*"Bob's Red Mill is proud to be a supporter of Virginia Garcia and their mission."*

– LORI SOBELSON, BOB'S RED MILL

Established in 1978, Bob's Red Mill has become a beacon of whole, healthy foods locally and across the country. Committed to preserving the most nutritious parts of their ingredients, Bob's is also committed to supporting and promoting healthy living through nutrition education.

From inspiring others to donate to Virginia Garcia through Willamette Week's Give!Guide to supporting the purchase of our new mobile clinic to provide onsite services to farmworkers, Bob's leadership and generosity helps us motivate others to support our mission. They are a true champion of our patients.

"Virginia Garcia's dedication to providing high-quality, compassionate health care to any person who needs it, regardless of nationality, gender, or economic status, fills a unique niche in Washington and Yamhill counties," said Lori Sobelson, Bob's Red Mill's director of corporate outreach. "Without Virginia Garcia, many individuals, but especially seasonal and migrant farmworkers, would not have access to even the most basic health care services."

Thank you Bob's Red Mill for your commitment to health care and improving the overall health of our patients.



# DECEMBER 2019



Virginia Garcia Memorial  
**HEALTH CENTER**

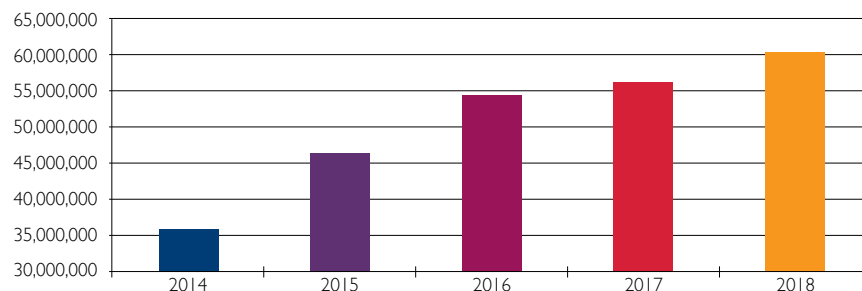
SUNDAY	MONDAY	TUESDAY	WEDNESDAY	THURSDAY	FRIDAY	SATURDAY
1	2	3	4	5	6	7
8	9	10	11	12	13	14
15	16	17	18	19	20	21
						Winter Solstice
22	23	24	25	26	27	28
Hanukkah Begins		Christmas Eve	Christmas	Kwanzaa Begins		
29	30	31				
	Hanukkah Ends	New Year's Eve				

# consolidated financial highlights

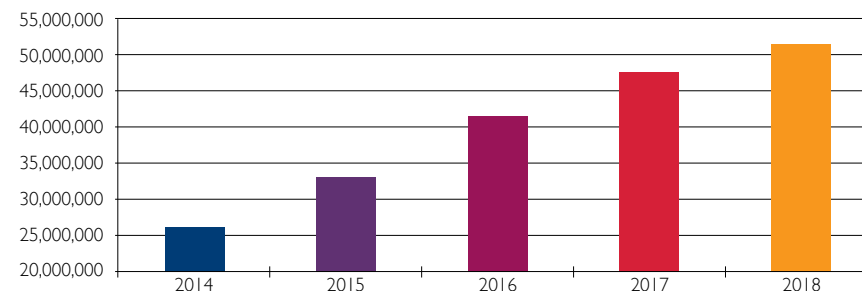


YEARS ENDED MARCH 31,	2014	2015	2016	2017	2018	5 Year Change
<b>OPERATING RESULTS</b>						
Total Revenue and Support	36,340,240	46,833,700	55,005,403	56,906,337	60,543,766	<b>66.6%</b>
Program Service Expenses	28,064,785	33,296,243	37,710,982	39,849,827	43,232,344	<b>54.0%</b>
Total expenses	33,756,004	40,025,604	46,505,588	50,576,431	56,580,124	<b>67.6%</b>
Program service expenses as percentage of total	83.1%	83.2%	81.1%	78.8%	76.4%	<b>n/a</b>
<b>FINANCIAL POSITION</b>						
Net property and equipment	18,591,267	18,822,870	18,301,705	21,851,950	25,271,905	<b>35.9%</b>
Total assets	29,707,108	36,219,246	44,622,318	54,571,874	57,781,288	<b>94.5%</b>
Total liabilities	3,556,939	3,260,981	3,164,238	6,783,888	6,029,660	<b>69.5%</b>
Net assets	26,150,169	32,958,265	41,458,080	47,787,986	51,751,628	<b>97.9%</b>
<b>LIQUIDITY</b>						
Cash and liquid investments	5,648,142	12,018,059	20,186,337	23,773,013	24,615,527	<b>335.8%</b>
Average daily expenses	92,482	109,659	127,413	138,566	155,014	<b>67.6%</b>
Number of days cash on hand	61	110	158	172	159	<b>160.0%</b>
Current ratio	3.65	5.79	8.25	5.32	6.42	<b>75.9%</b>
<b>CAPITAL INVESTMENT</b>						
Purchases of property & equipment	1,692,586	1,260,135	609,837	4,745,197	5,151,218	<b>n/a</b>
Depreciation expense	882,638	1,028,532	1,131,002	1,179,594	1,485,684	<b>68.3%</b>
Capitalization ratio	191.8%	122.5%	53.9%	402.3%	346.7%	<b>n/a</b>

Revenue and Support



Net Assets



2018: Administrative expenses as a percentage of total: 21.5%

Fundraising expenses as percentage of total: 2.1%

# leadership

## Board of Directors & Executive Team

### HEALTH CENTER BOARD OF DIRECTORS

**Laurinda Mackenzie, Chair** – Community Representative  
**Ricardo Palazuelos, Vice Chair** – Patient Representative  
**Jessica Kitt, Secretary** – Patient Representative  
**Susan T. Felstiner, Treasurer** – Community Representative  
**Alejandra Aguilar** – Patient Representative  
**Ernestina Aranda** – Patient Representative  
**Ann E. Barr-Gillespie** – Community Representative  
**Miguel Calderon** – Patient Representative  
**Rafal Decker** – Patient Representative  
**Wilfredo Figueroa** – Patient Representative

### FOUNDATION BOARD OF DIRECTORS

**Ellen Garcia, Chair** – Providence ElderPlace  
**Matt Austin, Vice Chair** – A-dec  
**Ketan Sampat, Treasurer** – CafeGive  
**Margaret R. Garza, Secretary** – Washington County  
**Dr. Imelda Dacones** – Northwest Permanente  
**Jon Down** – University of Portland  
**Elizabeth Furse** – Retired  
**Lina Garcia Seabold** – Garcia Seabold Investments  
**Anita Jackson** – Jackson Pacific Consulting  
**Michelle Kirkland** – Tuality Healthcare  
**Katie O'Neill** – Legacy Health  
**Roger Reyes** – Nike, Inc.  
**Lisa J. Rowley** – Pacific University  
**Michelle Stafford** – World of Smiles Pediatric Dentistry  
**Michael Willes** – Tonkon Torp LLP

### Ex-Officio Members

**Gil Muñoz** – Virginia Garcia Memorial Health Center  
**Serena Cruz** – Virginia Garcia Memorial Foundation

### EXECUTIVE TEAM

**Gil Muñoz, MPA** – Chief Executive Officer  
**Serena Cruz, MPP/JD** – Executive Director, Foundation  
**Araceli Gaytan** – Chief Financial Officer  
**Maria E. Loreda** – Chief Operations Officer  
**Lena Ulvi** – Human Resources Director  
**Juan Garfias** – Information Technology Director  
**Rachel Li** – Organizational Development Director  
**Laura Byerly, MD** – Medical Director  
**Chris Hill, MD** – Associate Medical Director  
**Lisa Bozzetti, DDS** – Dental Director  
**Sarah Deines, PharmD, BCACP** – Director of Quality  
**Christine Hicks, RPh** – Director of Pharmacy



# donors

## Foundation, Public & Corporate Partners



Anonymous  
A to Z Wineworks / REX HILL  
A-dec  
The Allison Inn & Spa  
American Cancer Society  
Apple Matching Gifts Program  
Austin Industries  
Bob's Red Mill  
Cambia Health Foundation  
Cambia Health Solutions  
CareOregon  
CE John Company, Inc.  
Cellar 503  
Chehalem Winery  
Children's Trust Fund Of Oregon  
The CHP Group  
City of Beaverton  
Clark/Lewis Family Foundation  
The Collins Foundation  
Dental Trade Alliance Foundation  
The Doctors Company  
Doris H. & Michael F. Garcia Fund  
Echo Bay Foundation  
Emily Andrews Portrait Design  
FamilyCare Inc.  
First Federal Savings & Loan Association of McMinnville  
Forest Grove Lions Club  
Green Grove Fund of the Oregon Community Foundation  
Hampton Lumber  
Hayes Family Foundation  
Health Share of Oregon

Henningsen Cold Storage Co.  
Hitachi Consulting  
Hoover Family Foundation  
Hot Diggity! Dog Walking + Pet Sitting  
Intel Corporation  
Jackson Family Wines  
Juan Young Trust  
Justus Orthodontics, LLC  
Kaiser Permanente Center for Health Research  
Kaiser Permanente Northwest  
Legacy Health  
M.J. Murdock Charitable Trust  
March of Dimes  
Maybelle Clark Macdonald Fund  
McDonald Zaring Insurance  
McKesson Medical-Surgical  
McMenamins Cedar Hills  
McMenamins Grand Lodge  
Metropolitan Area Communications Commission  
Metropolitan Land Group  
Meyer Memorial Trust  
Mississippi Studios  
Moda Health  
Moore & Welliver  
National Association of Community Health Centers  
Nectar Graphics  
NIKE Employee Match Program  
Northwest Permanente P.C.  
Northwest Print Strategies, Inc.  
NW Natural

OCF Joseph E. Weston Public Foundation  
OHSU Knight Cancer Institute  
Oral Health America  
Oregon College Savings Plan  
Oregon Community Foundation  
Oregon Health & Science University  
Oregon Health & Science University, Division of Hospital Medicine  
Oregon Health Authority  
Oregon Health Authority/Office of Equity and Inclusion  
Oregon Health Insurance Marketplace  
Oregon Jewish Community Foundation  
Oregon Public Health Institute  
Oregon School-Based Health Alliance  
Organic Valley  
Pacific Landscape Management  
Pacific University  
Passport To Languages, Inc.  
Patricia Eiting Foundation  
Paulus Foundation Inc.  
PavelComm  
The Peierls Foundation, Inc.  
Pfizer RxPathways  
Point B  
¿Por Qué No? Taqueria  
Portland Timbers  
Providence Health & Services  
Regence BlueCross BlueShield of Oregon  
The Reser Family Foundation  
Reser's Cares  
Ride Connection  
Rose City Park Presbyterian Church

Rose E. Tucker Charitable Trust  
SagaCity Media, Inc.  
Scott Edwards Architecture LLP  
Siletz Tribal Charitable Contribution Fund  
Social Venture Partners Portland  
The Standard Charitable Foundation  
Starseed Foundation  
The Stimson-Miller Foundation  
Susan G. Komen Oregon & SW Washington  
Thermo Fisher Scientific  
Tillamook County Creamery Association  
Tonkon Torp LLP  
Tuality Health Alliance  
Tuality Healthcare  
Tuality Healthcare Foundation  
U.S. Bank  
UBS  
United Way of the Columbia-Willamette  
Walmart  
Walsh Construction Co.  
Washington County Department of Health and Human Services  
Welch Allyn  
Wells Fargo  
Willamette Valley Medical Center  
Windermere West, LLC  
Women's Healthcare Associates, LLC  
World Of Smiles Pediatric Detistry  
Yamhill Community Care Organization  
Yamhill County Health and Human Services Department  
Yellow House Fund of the Tides Foundation  
Zion Lutheran Church

# friends

## Major Donors to Virginia Garcia

Anonymous  
 Sheryl & Susan Anderson  
 Elena Andresen and Kevin Mickelsen  
 Ater Family Fund of the Oregon  
 Community Foundation  
 Ken & Celia Austin  
 Matt & Shannon Austin  
 Lynn Baker & Eve Lonnquist  
 Meena Baker  
 Ann & Peter Barr-Gillespie  
 Susan Bisgyer  
 Adriane T. and Samuel S. Blackman  
 Family Fund of the Oregon  
 Community Foundation  
 Don & Bonnie Blish  
 Betty Bode, PhD, RN  
 Bill Bortz  
 Christ M. Bouneff, DMD &  
 Barbara A. Bouneff  
 Lisa Bozzetti, DDS & Kåre Hultén  
 Eileen Brady & Brian A. Rohter  
 Brenda J. Brischetto, MD &  
 Evan T. Saulino, MD  
 CJ Burnstead Charitable Fund  
 of Schwab Charitable  
 Laura Byerly, MD  
 Carol Byerly  
 Stefanny Caballero & Ryan Crislip  
 Harriet Carpenter & Anita Pace  
 Dr. Tanya Carter  
 Joseph & Julie Cassin  
 Janet Roberts & Ed Clark  
 Molly Cliff Hilts  
 Susan Climo & Jack Friedman  
 Derrick Coder  
 Barbara Cohn  
 Dr. Allison Coudert  
 Robert & Susan Coussens  
 Jenny Crowe & Jeff Burstein  
 Serena Cruz  
 Imelda Dacones, MD  
 Davidson Family Giving Fund

Andrew Davidson & Margot Nelle  
 Enrique de Castro, MD  
 Oregon Immunization Program  
 Jon & Nada Down  
 Loïc Dufresne de Virel  
 Rachel M. & R. Brendan Dummigan  
 Colin & Rosine Evans  
 Wilfredo Figueroa & Daniliz Ortega  
 Charles & Angela Fleckenstein  
 Cara Frey & Jennifer Warner  
 Michelle Ganow-Jones & Trevor Jones  
 Ellen Garcia & Rob Luck  
 Lina Garcia Seabold & Steve Seabold  
 Maryanne Garvie-Loveland &  
 Brandon Loveland  
 Margaret Garza & Armando Aranda  
 Osvaldo Gonzalez & Dr. Elizabeth Flores  
 Humberto Gonzalez  
 Andrew & Gail Hahs  
 Dr. Lesley Hallick  
 Deb Hatcher  
 Michele Haynes & Jessica Bledsoe  
 Michael Henningsen  
 Christine & Bud Hicks  
 Michele & Thomas Hildrum  
 Christian N. Hill, MD & Laura Korman, MD  
 Inge Hindel  
 James & Melissa Huntley  
 Ing Family Fund of the Oregon  
 Community Foundation  
 Benson Inkley  
 Anita & Phil Jackson  
 Brian & RaeAnn Jackson  
 Lyn Jacobs & Juvencio Argueta  
 Joan Jasper  
 Ashok Kabadi  
 Joan Kapowich & Steve Miner  
 Michael & Kristen Kern  
 Michelle Kirkland  
 Theresa Kirsch & Bob Grover  
 Jim & Nancy Kratochvil

Steve & Lorretta Krautscheid  
 Prakash Kripalani  
 Ronni Lacroute  
 Beckie Lee & Tim Kniser  
 Dr. Virginia (Jennie) Leslie & Bradley Taylor  
 Kent Leslie  
 Foon Wei Lew & Jennifer Lee  
 Michael Lewellen  
 Rachel & Oscar Li  
 Jerry & Anita Lindsay  
 Paul and Sandra Little  
 Maria & Aloy Loreda  
 Richard & Diane Lowensohn  
 Paul Lumley  
 Laurinda Mackenzie & Larry Rosencrantz  
 Olivia MacKenzie  
 Jenny & Carter MacNichol  
 Commissioner Greg Malinowski  
 Amadeo & Diana Martinez  
 Marianne & Eldon Mauldin  
 Seamus McCarthy  
 Lisa McClellan  
 Janet Meyer  
 Mark Miller & Dawn Daniels  
 Brad Miller  
 Mark & Elizabeth Moisan  
 Cathy Moonshine  
 Michael & Panvadee Moore  
 Janet Moss  
 Gil Muñoz & Julie Dir-Muñoz  
 Richard Myers & Mary Krummel  
 Lisa Naito  
 Maureen Nash  
 Kathy Nieminsky  
 Amy O'Neill & Larry Staver  
 Katie O'Neill & Dell Herreid  
 Barbara & Art Palmer  
 PavelComm/Jaime Pavel & Bonnie Pavel  
 Dr. Eric Poolman  
 Susan & Fred Powers  
 Amy Prosenjak

Eduardo A. Puelma  
 Bhavesh & Shradha Rajani  
 Micha & Chris Ramsey  
 Meenakshi Rao & Bennet Battaile  
 Patricia J. Reser  
 Larry & Janet Richards  
 Jennifer & Lee Robertson  
 Maria Rojo de Steffey & J. Daniel Steffey  
 Christine & Andy Rontal  
 Lisa Rowley  
 Dr. Michael Ryan  
 Ketan Sampat & Kay Gage  
 Gretchen Schnepfer & Darby Granberry  
 Sid & Teresa Scott  
 Chip Shields  
 Charmin & James Shiely  
 Jared & Michelle Short  
 Kemp & Robyn Shuey  
 Bob & Mary Dee Singh  
 Mark Skarpness & Linh Phan  
 Rolf Sohlberg & Luann Warren-Sohlberg  
 Dr. Michelle Stafford & Nicholas Peterka  
 Susan & Dan Stein  
 Darci and Charlie Swindells Fund at the  
 Oregon Community Foundation  
 Evangeline & Jon Tardiff, PA-C  
 Dr. Curtis T. Thompson &  
 Joseph F. Mitchoff  
 Julie & Nick Titus  
 Doug Tunnell, Brick House Wine Co.  
 Ann Turner, MD & Catherine Bax  
 Yolanda Valdes Rementería  
 Greg & Joan Van Pelt  
 Christine & David Vernier  
 Rahul Vora  
 Bob & Marcia Walsh  
 Katrina and Ted Wheeler Fund of the  
 Oregon Community Foundation  
 Gina Westhoff, MD & Michael Khavul  
 Michael & Natalie Willes  
 Judy & Jerry Willey  
 Carrie Wynkoop & Kari Chisholm

*\*Friends of Virginia Garcia are donors who give \$1,000 or more annually. Every effort has been made to list Friends who gave between April 1, 2017 and June 30, 2018. If your name has been omitted or listed incorrectly, please accept our apologies and contact us at [foundation@vgmhc.org](mailto:foundation@vgmhc.org) or (503) 352-8618 so we can correct it.*



Virginia Garcia Memorial Foundation  
PO Box 6149, Aloha, Oregon 97007  
[Foundation@vgmhc.org](mailto:Foundation@vgmhc.org)  
[www.viriniagarcia.org](http://www.viriniagarcia.org)

 [Facebook.com/VGMHC](https://www.facebook.com/VGMHC) & [Facebook.com/VGMHCComunidad](https://www.facebook.com/VGMHCComunidad) (Spanish)

 [@VirginiaGarcia](https://twitter.com/VirginiaGarcia)

 [Linkedin.com/company/871851/](https://www.linkedin.com/company/871851/)



Virginia Garcia Memorial  
**HEALTH & CENTER**  
**FOUNDATION**